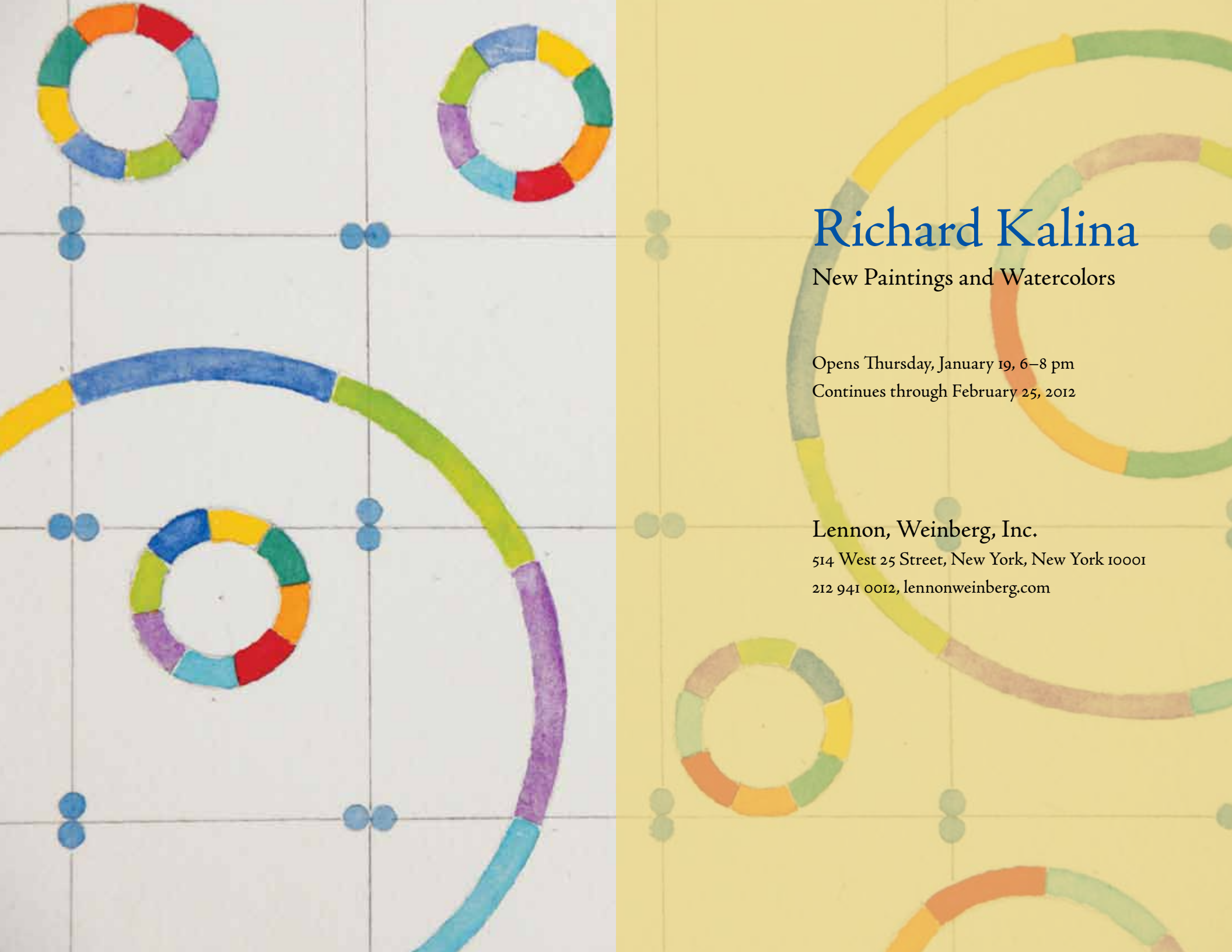


Richard Kalina

New Paintings and Watercolors



LENNON, WEINBERG, INC.



Richard Kalina

New Paintings and Watercolors

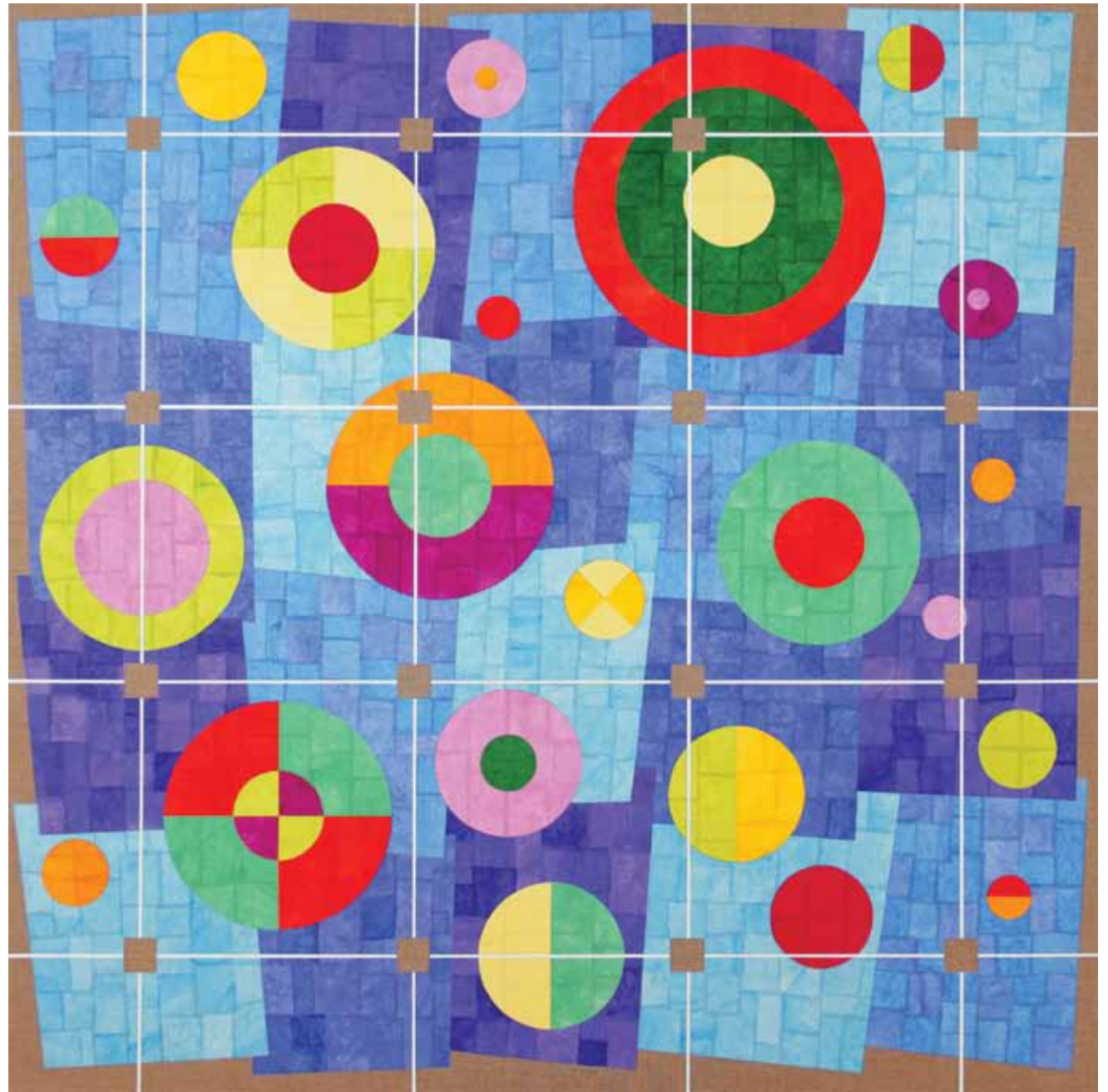
Opens Thursday, January 19, 6–8 pm

Continues through February 25, 2012

Lennon, Weinberg, Inc.

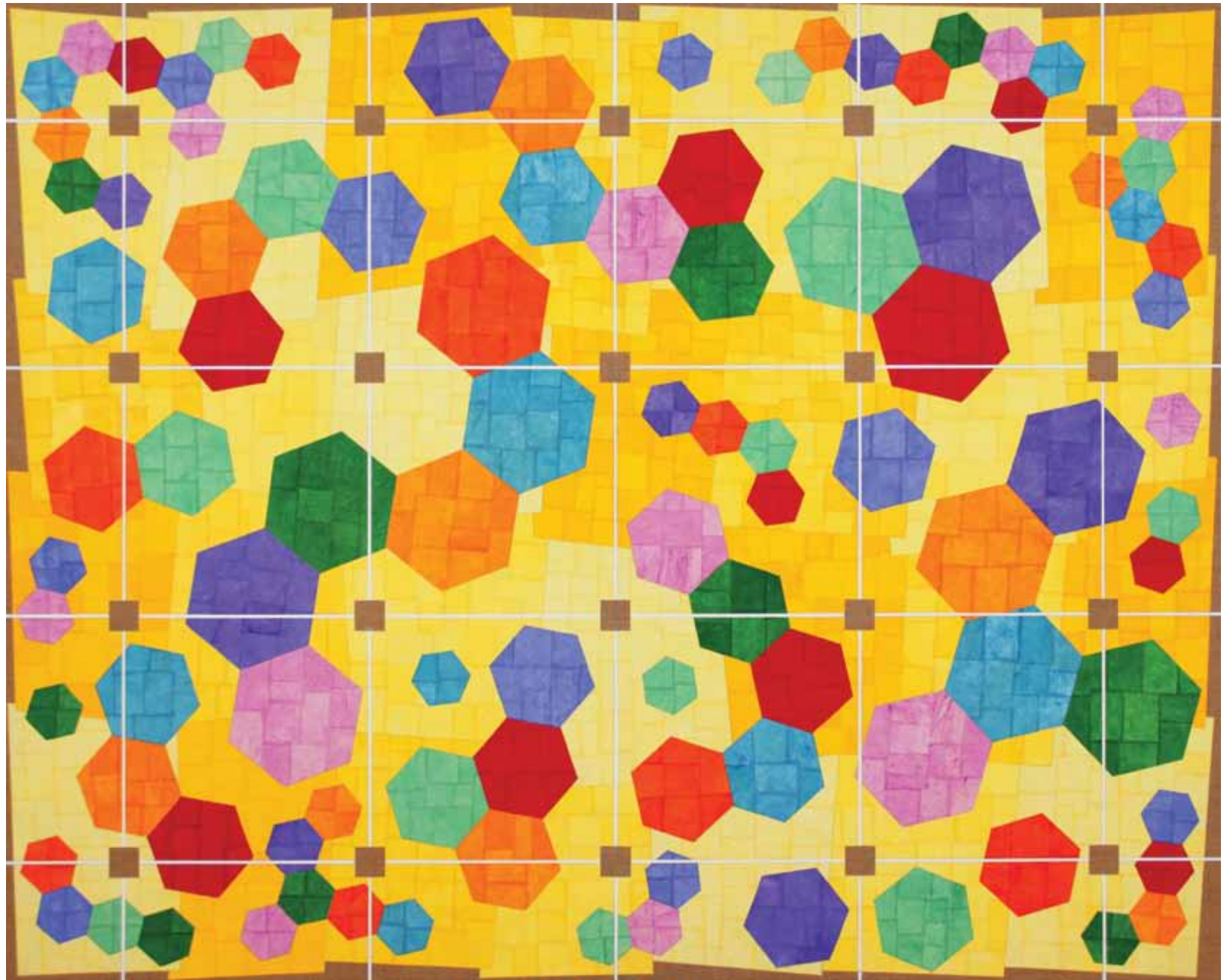
514 West 25 Street, New York, New York 10001

212 941 0012, lennonweinberg.com



Frequency Sector

2010, collage, acrylic, flashe on linen, 48 x 48 inches



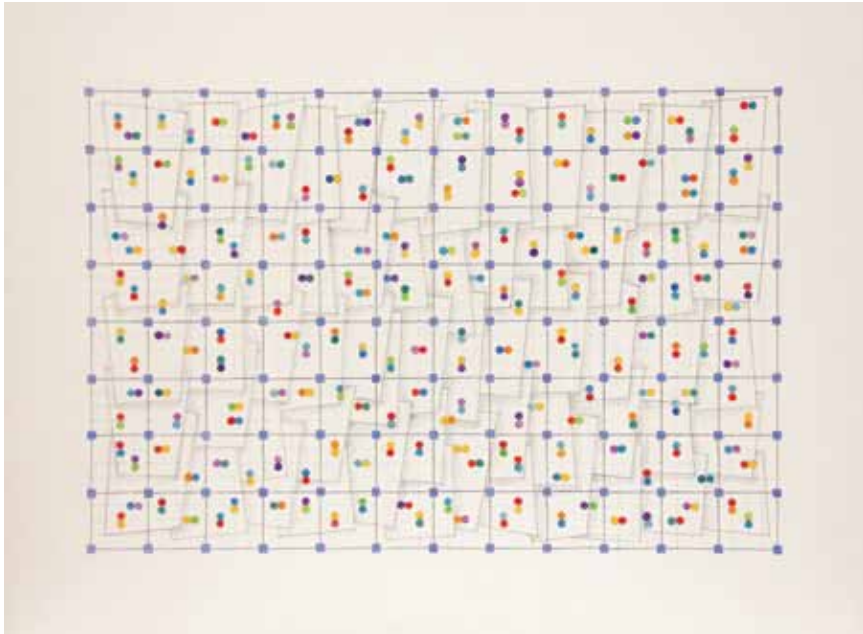
A Cartesian Diver

2009, collage, acrylic, flashe on linen, 48 x 60 inches

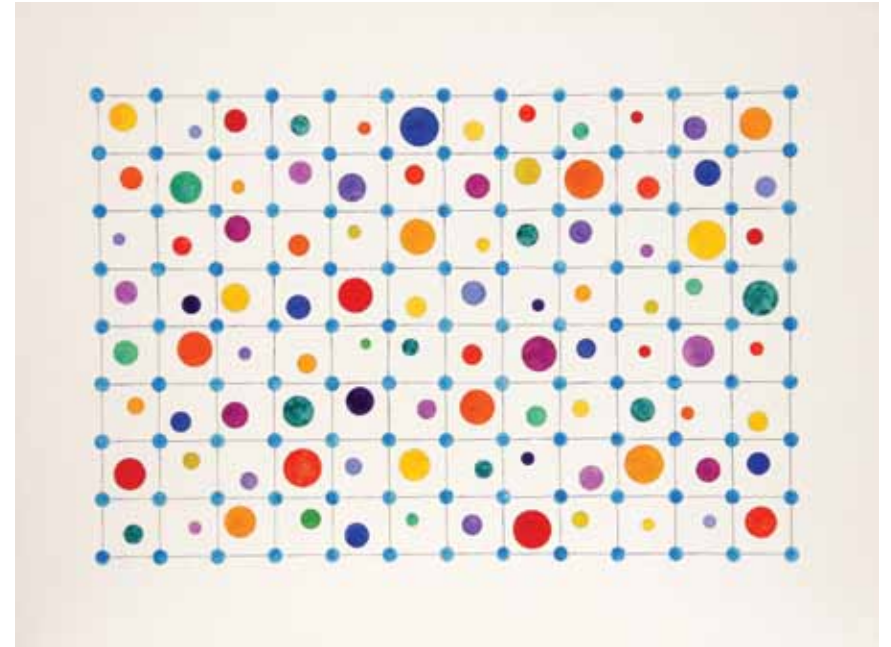


Dyad Marker Sequence

2010, collage, acrylic, flashe on linen, 40 x 60 inches. Private collection



By Observing Something We Change It
2011, watercolor, graphite and ink on paper, 22½ x 30 inches



Hadley Castor Index
2009, watercolor and ink on paper, 22½ x 30 inches

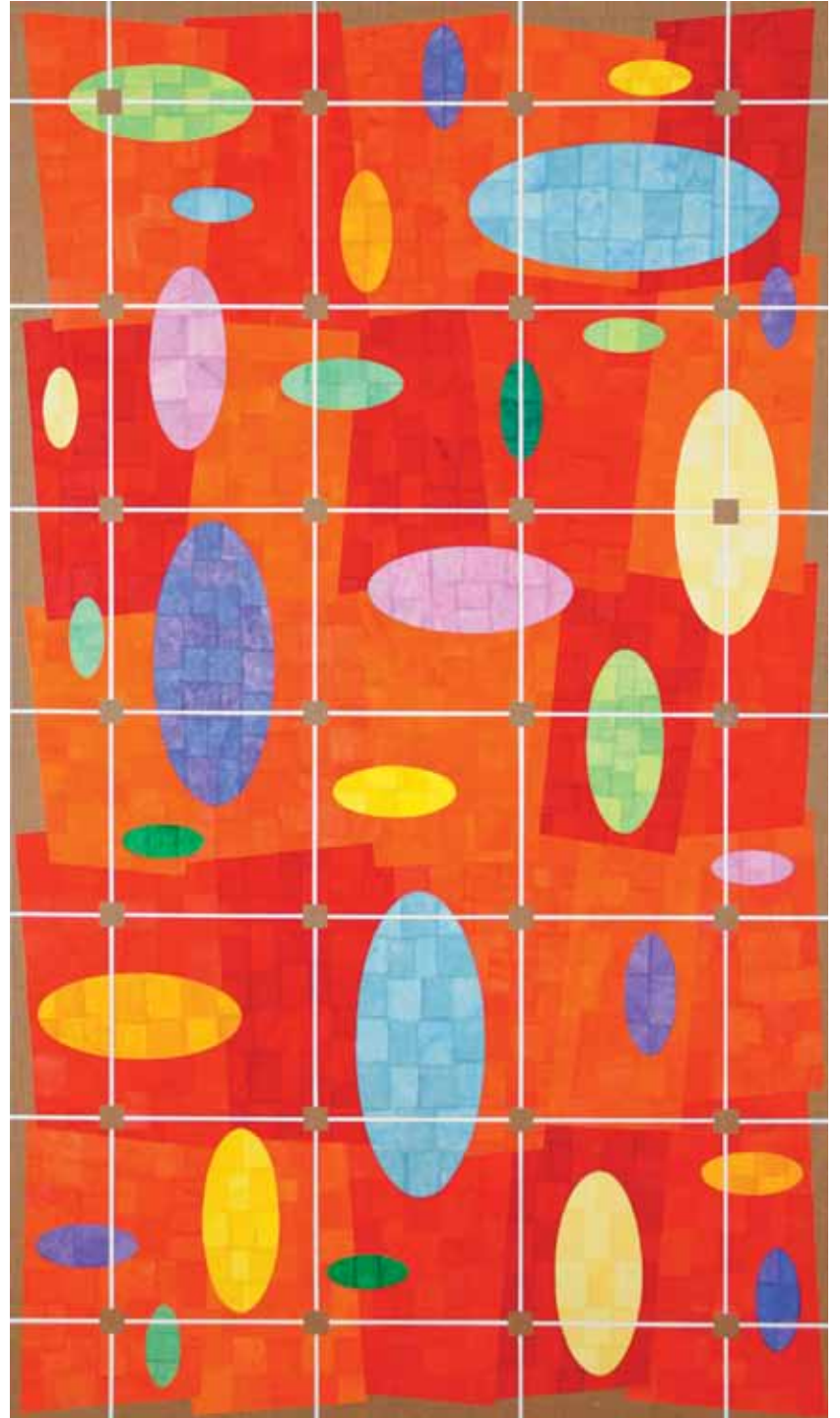


Ordinal

2011, collage, acrylic, flashe on linen, 40 x 60 inches

Azimuth

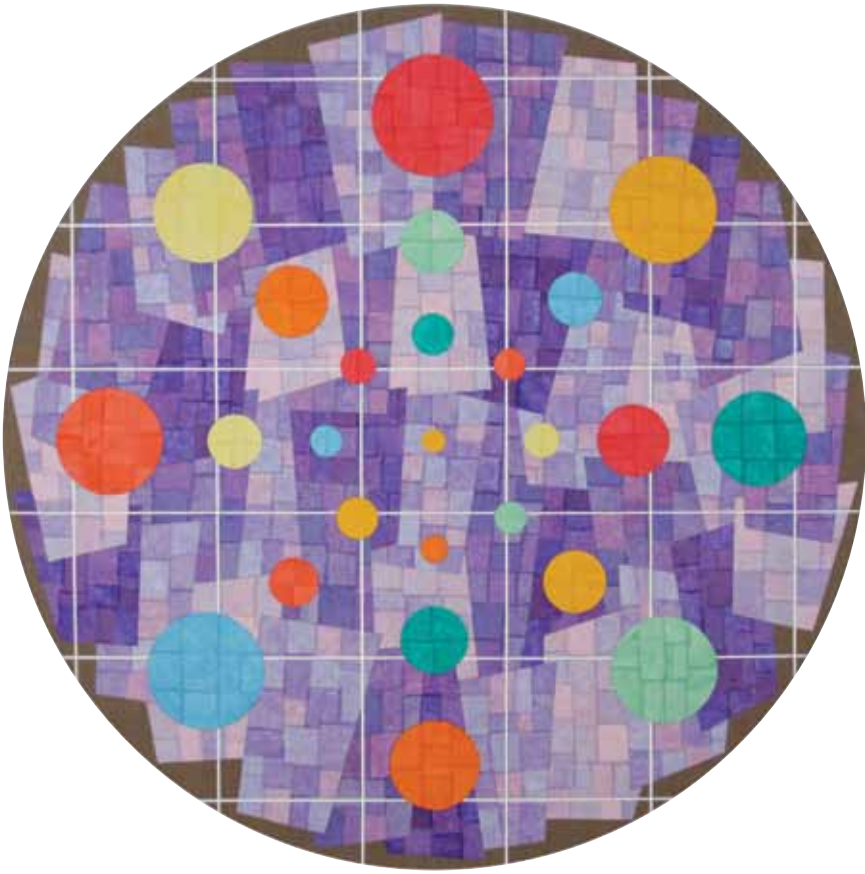
2011, collage, acrylic, flashe on linen, 70 x 40 inches





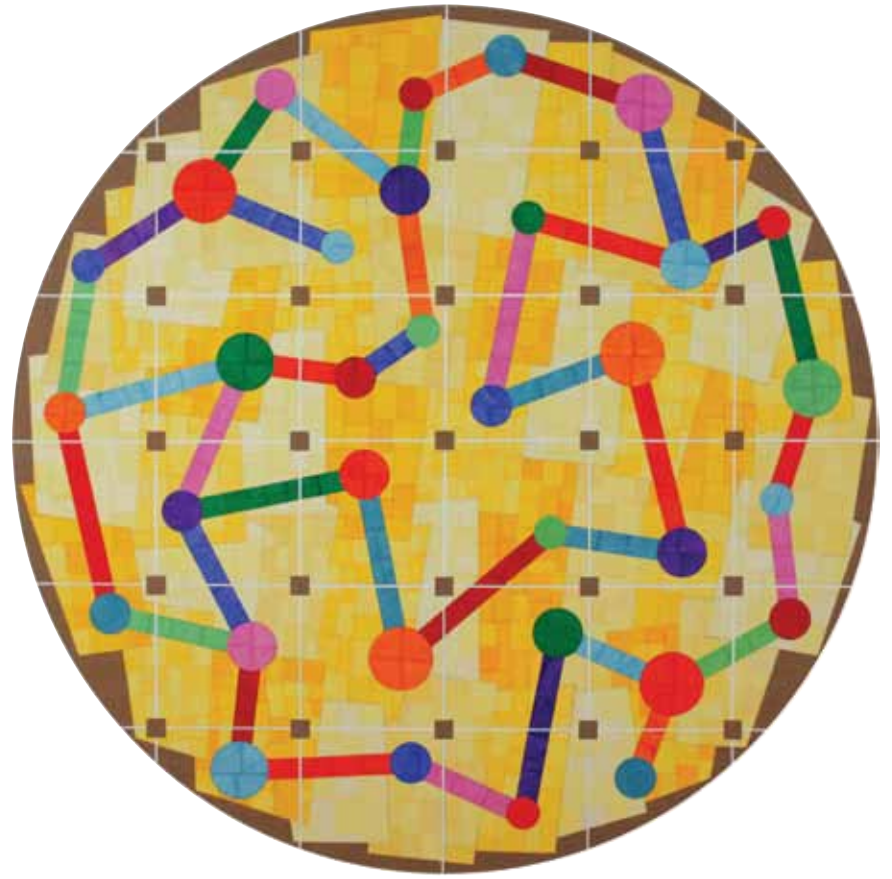
Perihelion

2011, collage, acrylic, flashe on linen, 32 x 72 inches



Parallax

2011, collage, acrylic, flashe on linen, 48 inches diameter



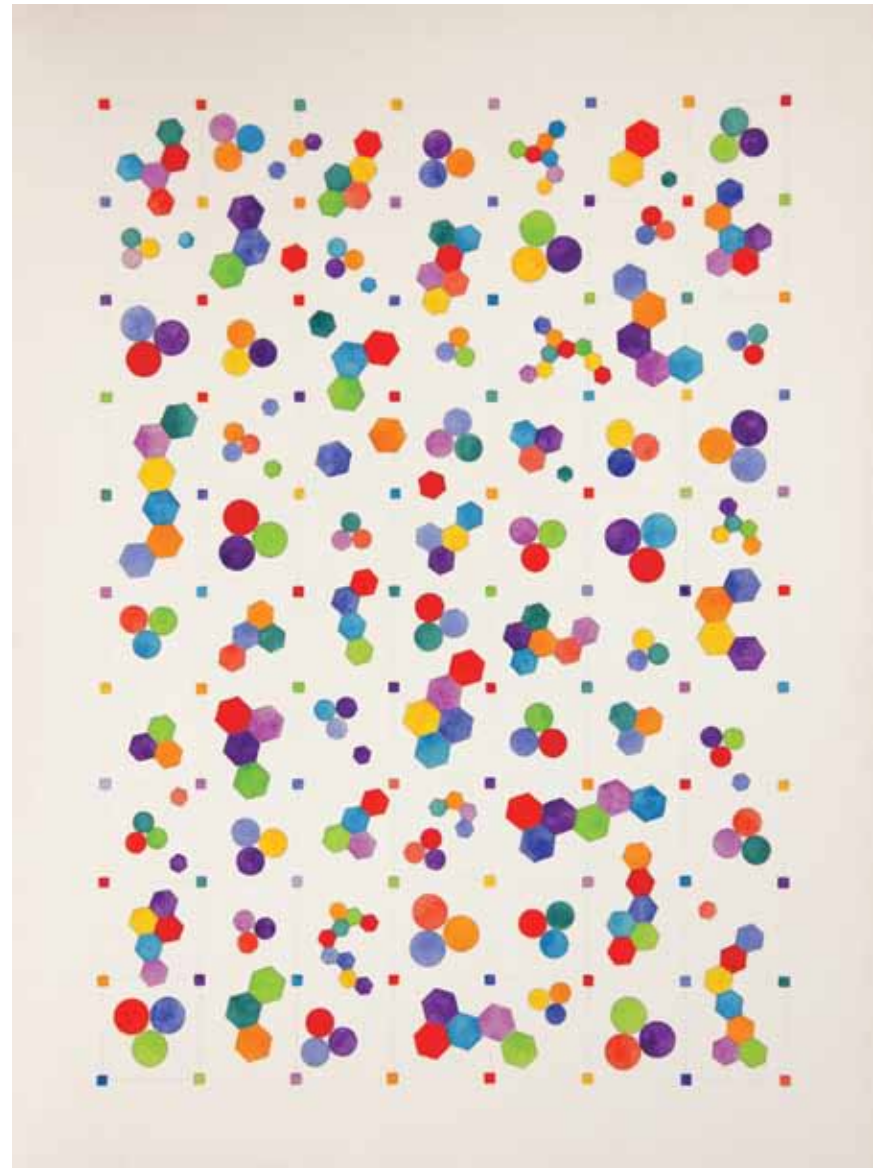
P₃ Vega

2011, collage, acrylic, flashe on linen, 52 inches diameter



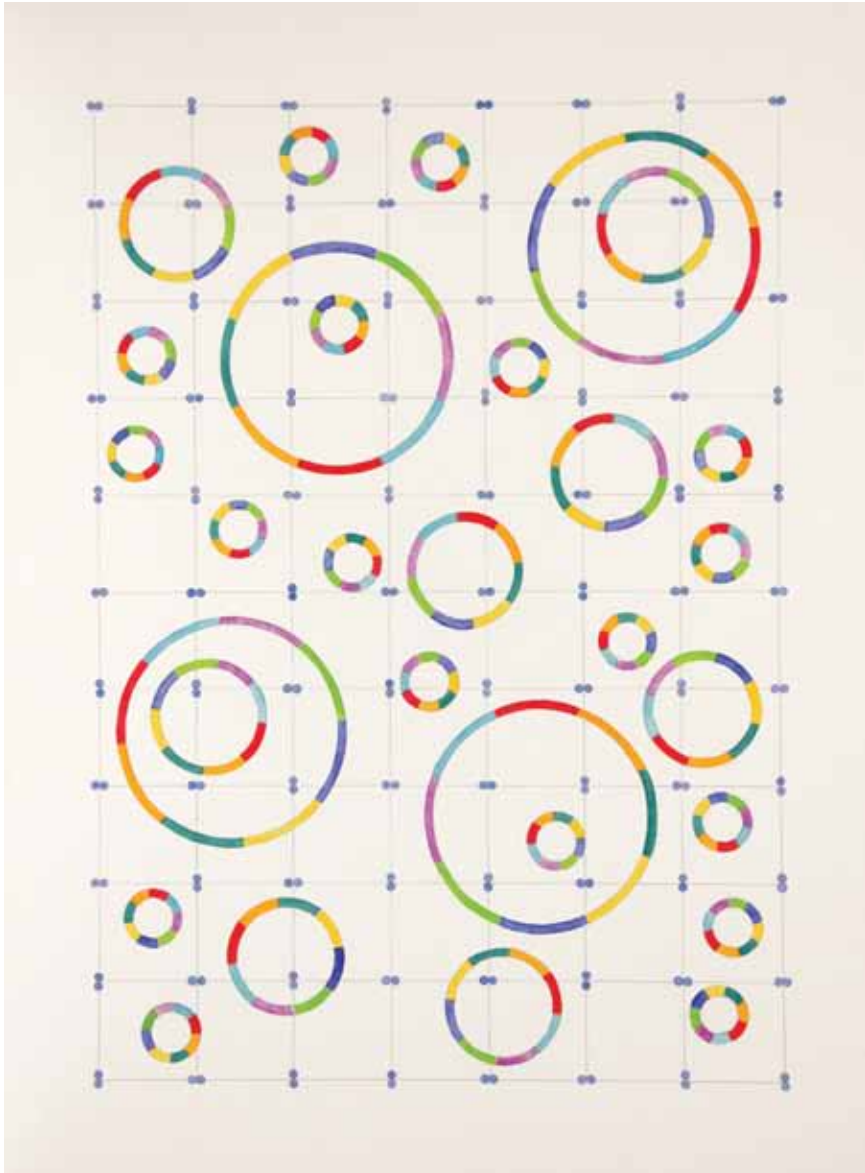
Spectrum Shift

2011, watercolor and graphite on paper, 30 x 22½ inches



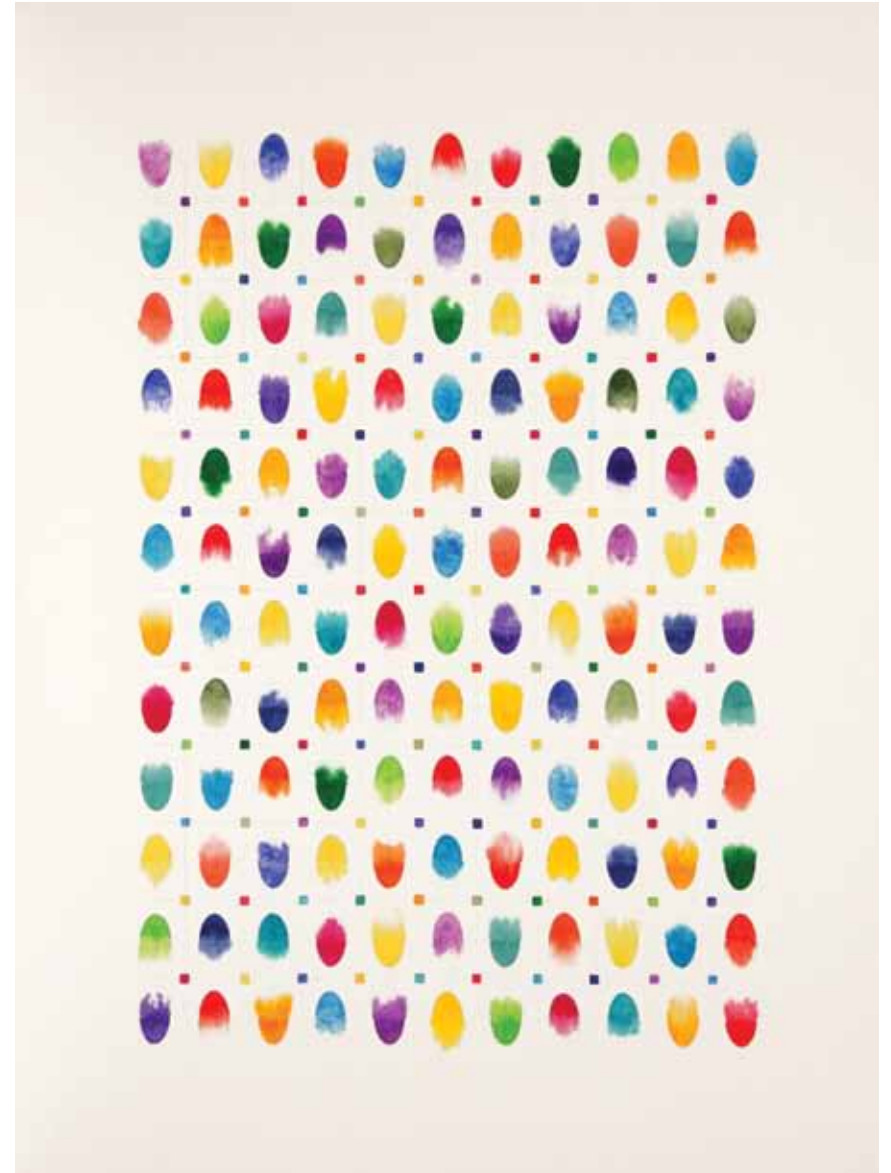
The Catalytic Cycle

2011, watercolor and graphite on paper, 30 x 22½ inches



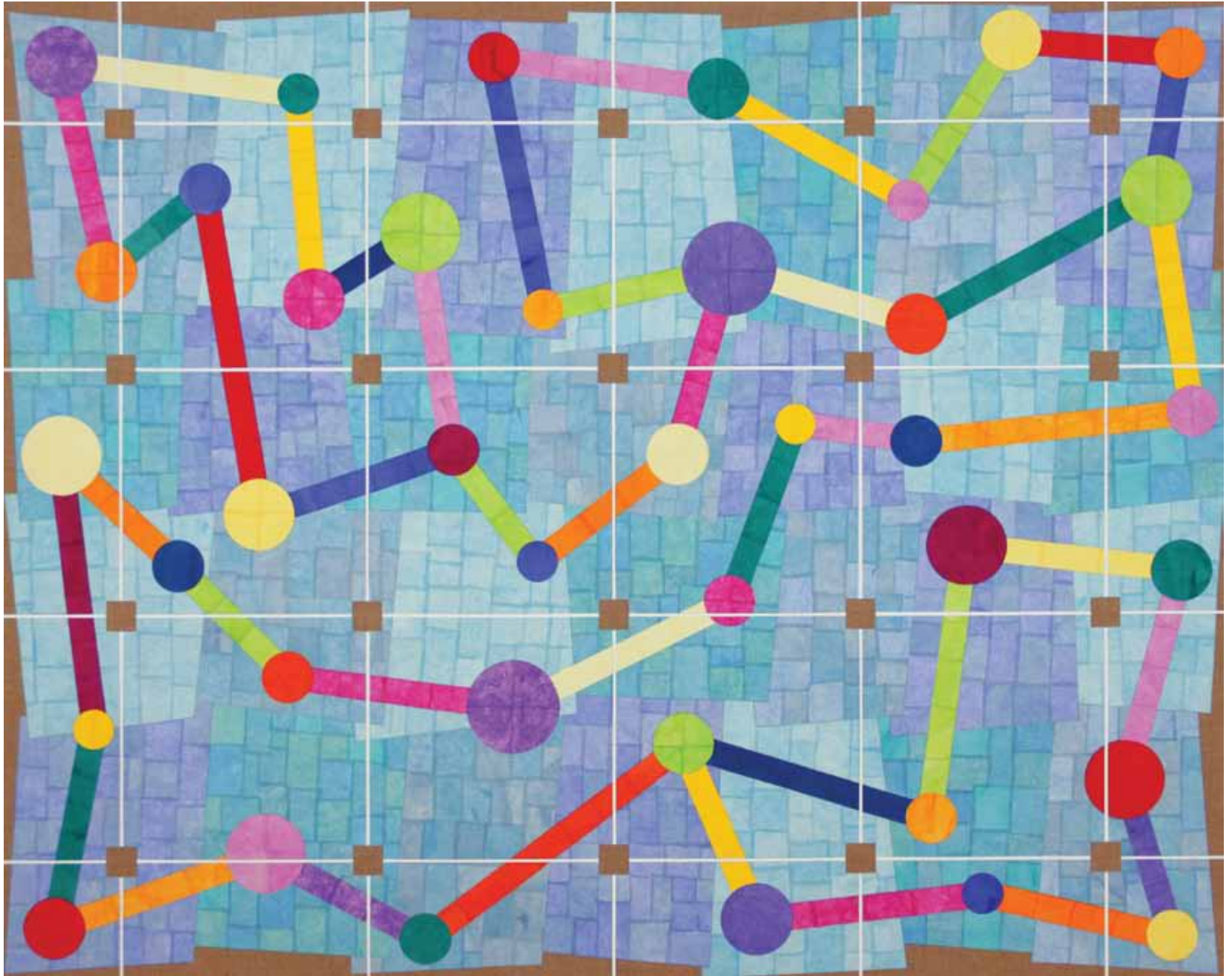
Telemetry

2011, watercolor and graphite on paper, 30 x 22½ inches



Trace Elements

2011, watercolor and graphite on paper, 30 x 22½ inches



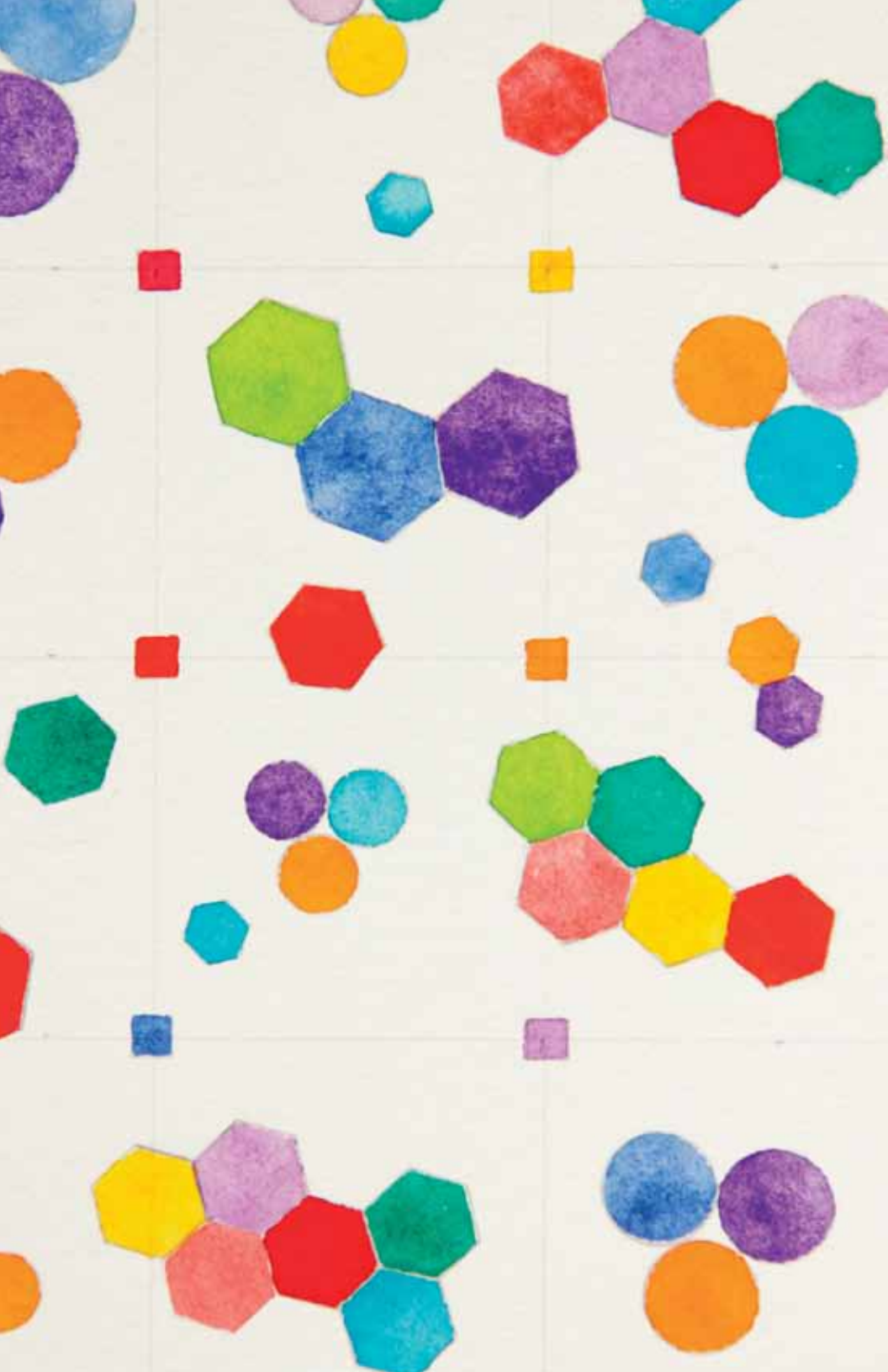
The Pembroke Variables

2010, collage, acrylic, flashe on canvas, 48 x 60 inches



As Yet To Be Proved

2010, watercolor and ink on paper, 22½ x 30 inches



In the summer of 2010, we presented a survey of Richard Kalina's paintings made during a span of forty years. *The New Yorker* said of him, "A painter's painter, Kalina has affinities with other New York artists who came of age in the sixties and seventies, from Jennifer Bartlett to Philip Taaffe." The magazine referred to *Luquillo*, a resin-coated crumpled striped canvas from 1970 as "post-painterly abstraction," and said of *A Cartesian Diver*, 2009, "the buoyant hexagons traverse a grid, the intersections of which are cut into squares of raw canvas, giving the delicate composition a satisfyingly rough contrast." It called the recent paintings "elegantly tessellated collages, his strongest work yet."

Along with *A Cartesian Diver*, the current exhibition includes seven additional paintings and a group of new watercolors inspired by the representation of scientific phenomena—astronomy, chemistry, physics, and cybernetics. In the last decade Kalina has refined a unique method of making these paintings. He begins with a small sketch, and then draws the composition to scale on vellum placed over the surface of a panel. This "cartoon" becomes the guide for the next steps: masking the edges and areas intended to remain exposed, laying down a white ground layer, and adhering hundreds of cut and torn pieces of painted paper onto the linen. Painting sheets of rice paper using only transparent pigments, Kalina rips and cuts small pieces of paper and overlaps or abuts them to form an array of ovals, rings, circles, bands and hexagons. The shapes are distributed across fields of irregular, interleaved polygons in variegated tones of close colors that establish a shallow planar space.

The paintings are finished with a grid of narrow white lines that connect the squares of exposed linen to each other and to the edge, except when, as in the case of *Parallax*, there are no exposed squares and the grid runs behind the shapes. The watercolors too have regular grids and a similar repertoire of shapes and colors.

Richard Kalina was born in 1946 and studied at the University of Pennsylvania. He began exhibiting in 1969 and has regularly shown his work in museums and galleries, both nationally and internationally. The current show is his twenty-second solo exhibition and his ninth at Lennon, Weinberg since 1992.

His works are included in museum collections such as the Arkansas Art Center, Grey Art Gallery, Guild Hall Museum, Fogg Art Museum, Indianapolis Museum of Art, Milwaukee Art Museum, National Museum of American Art, Norton Gallery, Parrish Museum, Pennsylvania Academy of Fine Arts, Rutgers University Art Museum, the Wadsworth Atheneum and Yale University Art Gallery.

In addition to his work in painting and drawing, Richard Kalina is a well-known art critic, serving as a Contributing Editor at *Art in America* and regularly publishing articles in that magazine and others. He is the author of *Imagining the Present: Context, Content, and the Role of the Critic*, published by Routledge Press. Richard Kalina is Professor of Art at Fordham University in New York, where he teaches studio art and art history. He is a newly elected member of the National Academy.

